

# Sport & Wellbeing Centre



## Community Bulletin – Autumn 2023

The construction of Roseville College's Sport and Wellbeing Centre, (SSD) - 9912 has completed its bulk excavation and, as we move ahead, we remain committed to undertaking the necessary work in a manner which is as considerate, respectful and accommodating as possible.

This Bulletin provides details about upcoming work and profiles the impact of our Learning Partnership in Construction with Taylor on Roseville College students, and we invite you to join us for our 2023 Learning Festival.

### Construction Contacts

Phone |  
**02 9884 1100** (Main Reception)

Email |  
**Construction@roseville.nsw.edu.au**

Website |  
www.rosevillecollege.com  
or use this quick-link:  
**bit.ly/RC\_SWELLCentre**

Site Manager |  
Ben Langshaw, Taylor Group  
24-hour mobile **0423 325 254**

# Construction Works Notice | SSD-9912

4 May 2023

## Upcoming Works

- Formwork and waterproofing to the mechanical plenum, with base and walls to be poured
- Concrete pours for the pool hall columns, the Stair 6 walls, the balance and backwash tank bases, and the remainder of the Level 1 car park columns
- Southern footings to be formed, reinforced and poured
- Structural steel installation in the Joy Yeo Centre breakthrough
- Excavation and formwork to the mechanical plenum continues.

## Completed Works

- All but five Level 1 car park columns and a retaining wall that separates the car park and pool hall have been (concrete) poured
- Formed and reinforcement installation to Stair 6
- Blinding to balance and backwash tanks
- Joy Yeo Centre breakthrough works, specifically the wall and pile have been cut and removed, and props and hoarding have been installed.

## Community updates



Scan this QR code using a smart device to view monthly construction work notices (PDF), as well as past bulletins and special notices.

Please contact us with questions or concerns using the details on the Bulletin cover, or visit Construction Contacts at [bit.ly/RC\\_SWELLCentre](https://bit.ly/RC_SWELLCentre) to access an online form.

## Diary invitations

**Saturday 20 May 2023**

Community Drop-in  
27 Bancroft Avenue, 12 - 1.30pm

We are hosting our autumn Community Drop-in event during the Learning Festival. Please visit our Sport & Wellbeing Centre marquee (in the main courtyard) between 12 - 1.30pm to meet representatives of the project team and peek through the hoarding to view the progress.

**Saturday 20 May 2023**

Roseville College Learning Festival  
27 Bancroft Avenue, 12 - 4.00pm

You're invited! The school's Learning Festival, essentially an Open Day, showcases what our students are currently learning through recitals, exhibitions, performances and more. From music to languages, science to art, sport to history... there is something for everyone. We look forward to seeing you!



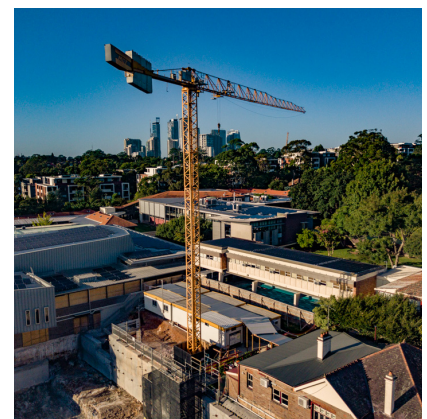
Above: Viewing windows in the hoarding.  
Below: Visit our marquee at the Learning Festival. Right: The impressive tower crane.



## Come and see!

New viewing windows have been installed just in time for the Learning Festival!

New hoarding, located on the southern boundary (near the Joy Yeo Centre), now includes several viewing windows so students and visitors can observe progress on the building site. The hoarding also includes details about the project and the jobs involved.





Students and staff mark International Women's Day by visiting the Sport & Wellbeing Construction site

“We loved wearing the safety equipment as it made us feel part of the construction community!”

Roseville College students and staff visited the live construction site of our Sport & Wellbeing Centre on 8 March to celebrate *Women Breaking Ground in Construction* at an International Women's Day Careers Lunch, as part of our Learning Partnership with Taylor.

Students in Years 10 – 12 with an interest in construction related roles gained career and industry insights from Taylor's Head of Design and Innovation, Ms Abbey Johnson, who was joined by Taylor Cadet Miss Noa De Jager, and Roseville College Class of 2022 Alumni, Miss Tara Vucetic (Pilbeam), pictured below, who are both studying Construction Project Management at the University of Technology.

Attending were Year 11 students Becky and Gian, who described the visit as very worthwhile.

‘We found the experience very interesting and have learnt a lot about women working in construction and STEM careers, inspiring us for our future careers. Throughout the talk, we learnt that women are important to the construction industry for their diverse perspectives and skill sets, women's rights



Credit and cover: Scott Ehler Photography

equipment of a Fluro vest and a hard hat as it made us feel part of the construction community! The operating of construction trucks in the background made the overall experience even more realistic. It was a great excursion,' they said.

to equal opportunity, ability to address labour shortages, potential to improve productivity, and ability to break down gender stereotypes which currently significant in our society.' 'We loved wearing the safety

Head teachers of departments, members of the executive team and classroom teachers also attended to observe the project in action, hear from industry professionals including site engineer Mr Matt Ellis, and explore how to apply aspects of a live construction project in the classroom for a deeper, real-life application to student learning.



*Learning Partnerships in Construction* delivers high-quality learning opportunities in collaboration with Taylor's *Women Breaking Ground* engagement program (TWIC). The aim is to provide girls with exposure to an industry that many may not have considered and that remains underrepresented by women, and to facilitate learning and networking opportunities with inspiring female professionals. **W**

## Hours of operation

---

### What to expect

*Ordinary work, including delivery of materials:* 7am – 6pm, Monday to Friday (inclusive), and 8am – 1pm on Saturday.

*Restricted hours for rock-breaking and similar work:* 9am – 12pm and 2 – 5pm, Monday to Friday, and 9am – 12pm on Saturday.

No work on Sundays or public holidays.

---

### Parking guidelines

Site workers are required to comply with guidelines in the current Construction Transport Management Plan, available online. Visitors to the site are encouraged to comply voluntarily, if their visit will exceed 2 hours.

---

### Managing the impact

Use the Construction Contact details on the cover if you have any questions.

## Gentle reminder

---

### What to expect from us

- Courtesy and respect, timely updates/responses, and accessible information
- 

### What to find online

- A dedicated section at our website for SSD - 9912. Visit [bit.ly/RC\\_SWELLCentre](https://bit.ly/RC_SWELLCentre)
- **Project introduction**
- **Project details** includes a link to NSW Planning Portal for State Significant Developments
- **Community updates** – or scan the QR code – provides information for our neighbours and local businesses:
  - *Construction Work Notices* (monthly)
  - *Project Bulletins* for news and updates
  - Invitations to *Community Drop-Ins* and public events at the College
- **Construction contacts** includes an option to opt-in to receive alerts about the project.